

En Vie®

www.en-vie-fashion.com

02
FEB / 2020
アンヴィ

COLLECTION
PIXIE DUST
STYLE

MOROCCAN JOURNEY
EDITORIAL

SKY VIEW
EDITORIAL

My time

Plus: Trends, Editorials
Photography and so much more!



Photography | MARCOS ROMANO (WWW.MARCOSROMANO.COM)
Designer | CELINE BOLTON, BCB SHANGHAI
Model | TINGTING FOR ESEE MODELS, SHANGHAI (WWW.ESEEMODEL.COM)

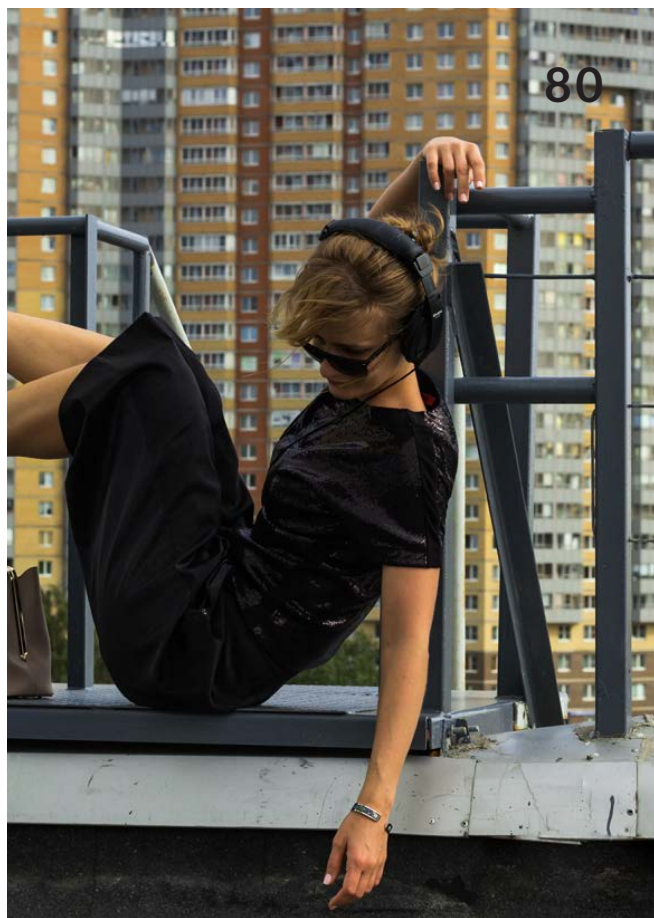






CONTENTS

- 08 EDITORS WORDS
- 09 STYLE **COLLECTION PIXIE DUST**
- 27 STYLE **COLLECTION M.IND**
- 39 EDITORIAL **CULTURE ENLIGHTENMENT**
- 56 EDITORIAL **RASHAN AND RUHSAAN**
- 62 EDITORIAL **MOROCCAN JOURNEY**
- 70 FASHION **THE SWEET LIFE**
- 74 ART **MODECAPRIOLE BY AGNES VAN DIJK**
- 80 EDITORIAL **CITY MIRROR**
- 83 FASHION **GREEN TWINS**
- 90 MAKE UP **IMPRESSIVE**
- 93 EDITORIAL **SKYVIEW**





62



09

TEAM

Editor in Chief & Director
GERD KRAMER

AD, Design & Illustration
AURORE DEMEDE

Graphic Designer
AYAKO NAGUMO
MINORU KOSAKA

Editors
DEVASMITA SAHA
ELIZABETH HUNT
EDWARD HATFIELD
JEN LOMAS
BASHIR O. HARRELL

Sub Editors
BRANDON LINDER
VERA CHAN
SILVIA GALASSO

Japanese Editors
TOMOYO TAKEMOTO
TOMOKO FUJII
HIROKO IKEDA
NORIKO
MINORU KOSAKA
TOMOYO TAKEMOTO
AYA ARAKAWA

German Editors
HEINZ PETER

French Editors
LOUISE BERTON

Spanish Editors
GLÁUCIA MONTEIRO

Korean Editors
SOOJIN LEE
JIYOUNG CHOI

Chinese Editors
ERIKA
JAYLON

Consultants
SOOJIN LEE
YUQI NAKAMURA
MIWA HIKITA

Marketing Iroha.co
YOKO YAMAMOTO
ELIZABETH PAIGE HUNT

Stylists
TOMOKO FUJII
EWA FIUTAK
JUSTYNA KORUSIEWICZ

Web & PR Managers
YOSHINORI YOSHIDA
JONAS LIEPPINEN
SAYAKA HASHIMOTO
MASAHIRO MINAMI

Disclaimer: Every effort is made to ensure all En Vie media is up-to-date. Please note that opinions expressed herein are not necessarily endorsed by the publisher. The publisher cannot be held liable for any loss, damage or distress resulting in errors, omissions or from adherence to any advice in this magazine. The publisher takes no responsibility for the quality or content of advertisements. All rights reserved by the copyright holder.
To see the full disclaimer please go to www.en-vie-fashion.com/disclaimer.html

FROM THE EDITOR



Hi,

Some part of everyday is spent doing something for others. Whether it is at work or at home supporting the family, we often put others' needs before our own. Maybe it is about time you have some time for yourself. Take a break and relax with this month's theme "My Time". Even when you are busy take a moment to have a coffee and put on some good music. Take time to rest.

All the best,
Gerd

Artistic direction | MELANIE MACHADO, ADR & LATIL PASCAL

Hair style | MÉLANIE MACHADO ET ADR FORMATION

Hair assistant | DELPHINE THIEFFRY, LAURA VARGAS

Make up | ELODIE BEAUCHAMP & MELANIE MACHADO

Stylist | CRYSTEL PILONE

Model | CARLA MAUREL, LOUISE LOCQUENEUX, EVA CHAVEAU

Video | MORGAN SELLES - SHIFFT

Photographer | LATIL PASCAL

Light & Logistics assistant | PATRICIA ROUSSET & MÉLANIE DELIGNY

Production & Press Relations | ELP HAIR PRODUCTION

COLLECTION
PIXIE DUST





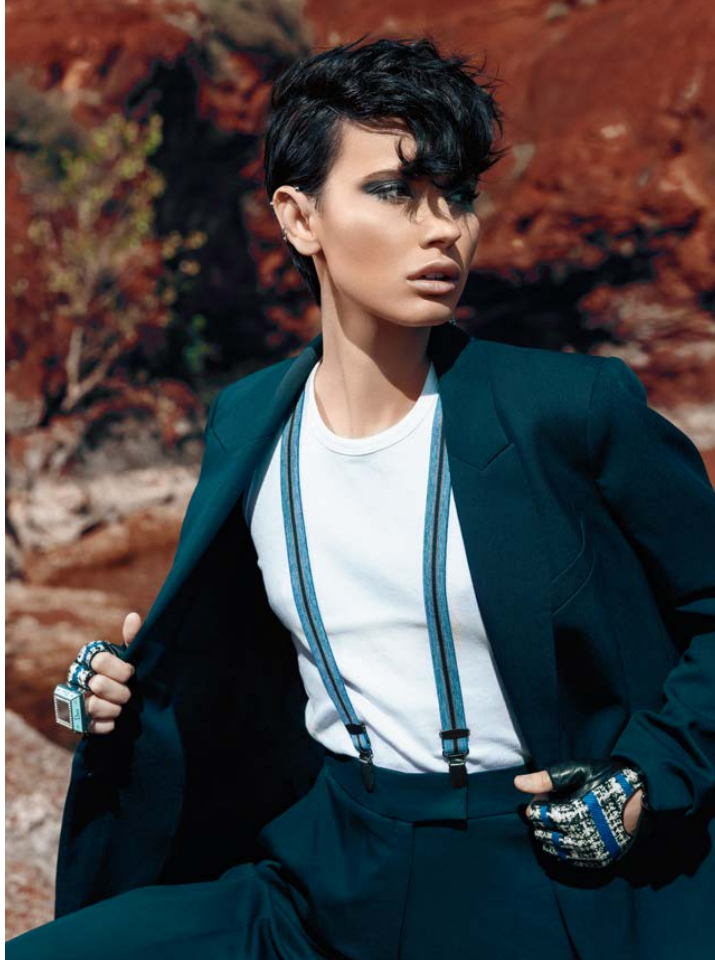






























COLLECTION M.IND

DA | MASHIRO & YOHAN MENZOYAN
Hair & Make up | MASHIRO FAMILY
Photo & Post Prod | LATIL PASCAL
Relation Presse | ELP HAIR PRODUCTION























CULTURE ENLIGHTENMENT

Director and photographer | JULIA CHERNYSHEVA

Director of photography | DENIS KARPENKOV

Fashion designers | EVE AND ESTHER, TRUM, HM, ZARA, VINTAGE

Model | KRISTINA, FIGARO PINK

Stylist | CATHY ROUGE

Make up & Hair | OLGA Biel

Assistant | NASTYA KUNINA

Location | HOUSE OF CULTURE "BERENDEY"



Blouse - Eve&Esther
Pants - Eve&Esther
Jacket - Eve&Esther
Belt - Bershka
Socks - Conte
Footwear - ZARA
Head accessories - Olga Biel



Dress - TRU.M
Sweater - ZARA
Belt - Levi's
Tights - Gracia
Footwear - KEDDO
Accessories - vintage market in Paris







Blouse - TRU.M
Skirt - TRU.M
Tights - Calzedonia
Footwear - Pull&Bear
Necklaces - Glance
Earrings - Lady Collection
Head accessories - Olga Biel







Blouse - TRU.M
Necklaces - Glance
Earrings - Lady Collection
Head accessories - Olga Biel



Dress - TRU.M
Belt - Caterina Leman
Tights - Calzedonia
Accessories - Lady Collection
Shawl - GUCCI
Footwear - Reserved



Dress - TRU.M
Accessories - Lady Collection



Blouse - Eve&Esther
Pants - Eve&Esther
Vest - Saint Laurent (vintage)
Cap - Reserved
Socks - Pierre Cardin
Footwear - H&M
Earrings - INCITY
Glasses - Vogue





Dress - TRU.M
Top - MONKI
Tights - Conte
Footwear - MANGO
Earrings - DIVA







Blouse - TRU.M
Scarf - Versace
Earrings - Lady Collection

RASHAN AND RUHSAAN



Photographer | KAREEM WILKERSON
Models | KHAFEEON LOVE

Top, Pants, Bag - Rashaan and Ruhsaan







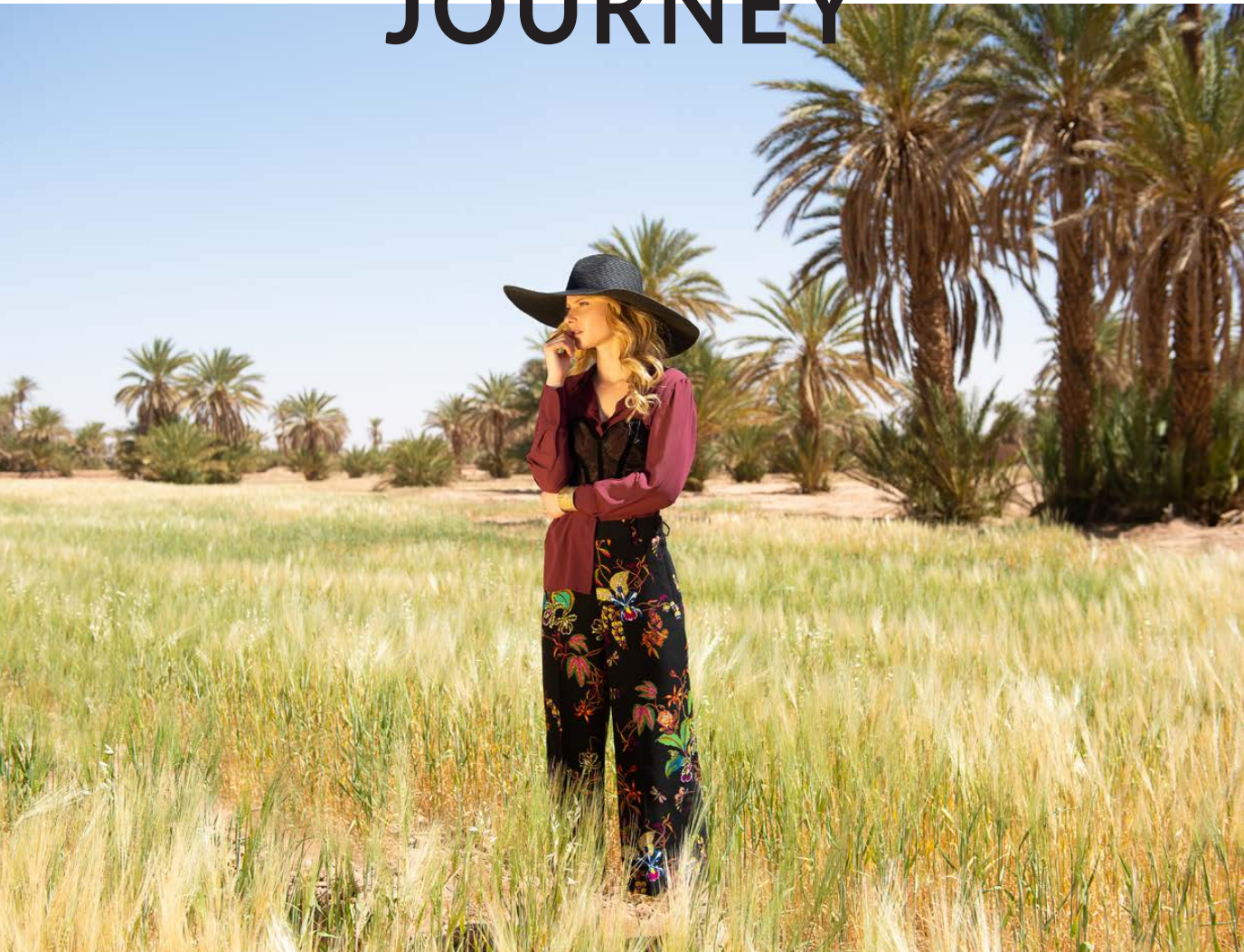
Top, Pants, Bag - Rashaan and Ruhsaan



Top, Pants - Rashaan and Ruhsaan



MOROCCAN JOURNEY



Model | INÈS LACORNE PIQUET
Photographer | CÉDRIC EYMA
Jewels | CLARA JASMINE
Artistic Director | LÉA NICOLAS



Hat, Shirt and Pants : personal shopping
Corset : Teddy Lesueur

Jacket : Mathieu Jeannet
Pants : Eymeric francois





Trench Coat : personal shopping
Top : Teddy Lesueur
Pants : Mathieu Jeannet



Jacket, Pants, Cheche : personal shopping







Dress : Eymeric Francois
Shirt : personal shopping

THE SWEET LIFE

Photographer | CARLO DI SANTO (WWW.CARLODISANTO.COM)

Stylist | FRANCESCO AMATO

Art Director | MIRIAM CARINO

Make up | HM MAKE UP ITALY

Press | CRISTINA VANNUZZI





THE “SWEET LIFE” BY HANNA MOORE MILANO

A playful liveliness dedicated to the joy of living, the desire to surprise with touches of elegance, characterizes the new capsule collection by Hanna Moore Milano for the collection SS 2020, which combines charm and eccentricity, remembers by “The Sweet Life”.

The urban-chic style garments, while remaining feminine and seductive, show Hanna Moore Milano’s constant innovative vision of fashion that breaks down the barriers of convention to create light and colourful outfits from which a playful lightheartedness and a rebellious soul shines.

Easily wearable dresses capable of transforming the ordinary into the extraordinary in a mix of tradition and absolute contemporaneity.

The Brand plays with volumes, details and shades, letting her creations speak and show the personality of every woman. The new capsule collection is the expression of a bold liveliness, the result of a free creativity and always devoted to a fashion that has art as its hallmark.





MODECAPRIOLE BY AGNES VAN DIJK



WWW.AGNESVANDIJK.NL
Photography | LIES VOGELZANG











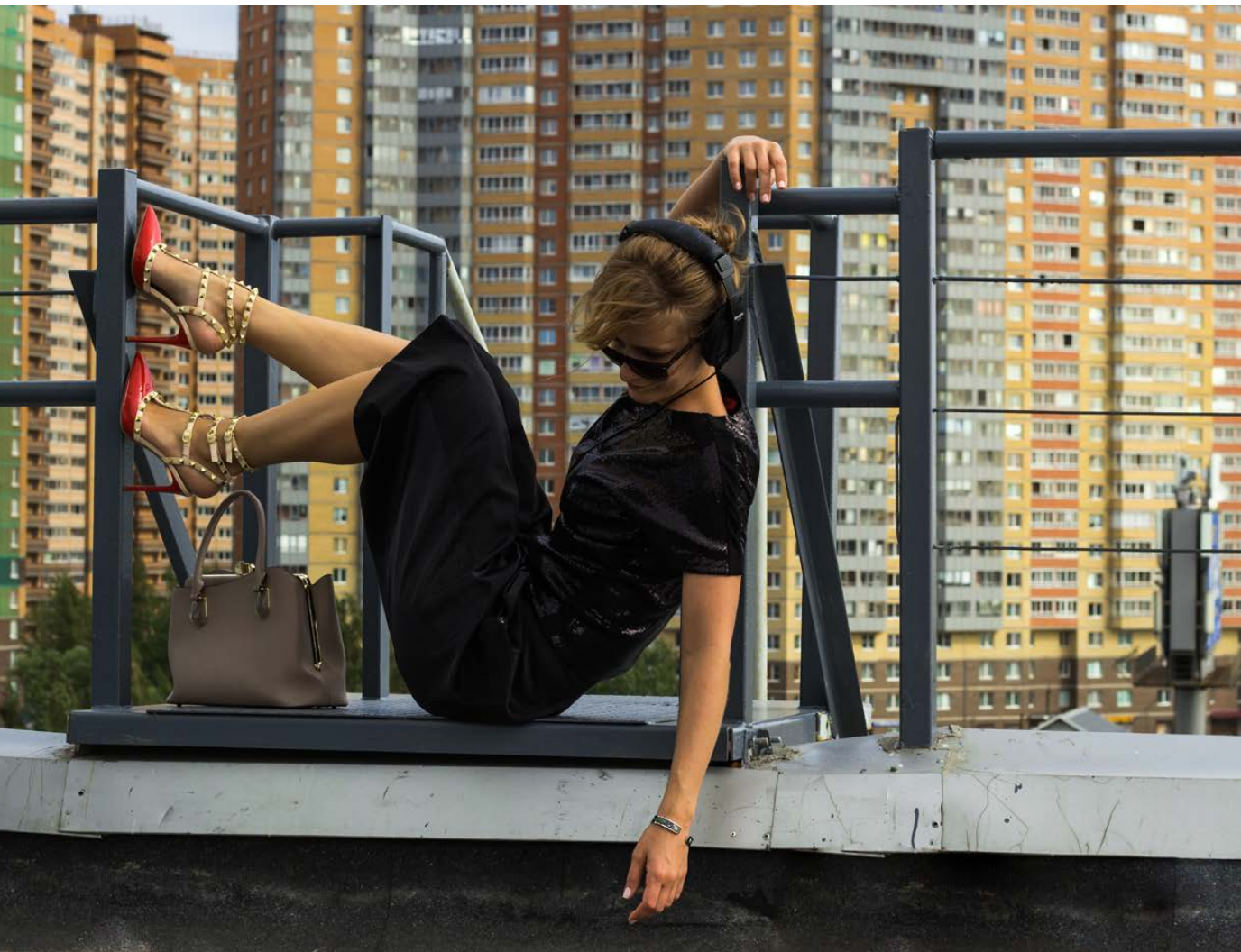
Photographer | JULIYA BUTOVA
Model | ELENA KONOVALOVA
Location | ST.PETERSBURG, RUSSIA

CITY MIRROR



Headphones: Seven
Glasses: Rayban
Clothes: Rinascimento
Shoes: Renzoni





Clothes: Rinascimento
Shoes: Renzi
Glasses: Rayban
Headphones: Sven
Handbag: Pola



GREEN TWINS

Photographers | TATIANA SHABELNIK & MAKSIM LEONOV

Fashion Designer | TATIANA SHABELNIK

Creative Director | MAKSIM LEONOV

Model | ERIN GREEN & DESIREE GREEN

Make up & Hair | MAKSIM LEONOV

Photo Retoucher | VIKA SADOVSKAIA

Location | WHITTIER, CA















@abu.hayeh

IMPRESSIVE

Photographer | MOHAMMED ABU HAYEH
MUA | HAIFA SAFAR
Model | SITORA BANU



@cbv.hayeh



SKY VIEW

Model | MARIUM ALI
MUA & Hair | NINA AHJAHNIA
Stylist / Designer | ROCHELLE MILLER
Photography | KARL M. LEE



Floor Length, Black Satin Gown: 2018.Good_Dress
"Coiled Fur & Latex, Single-Sleeve": House of GoGé





Pink Ball Gown, with Lace Bodice: Victor10188
"Fairy Gnome Hi-Hat", in Pink Organza: House of GoGé













Floor Length, Black Satin Gown: 2018.Good_Dress
Rubber Dome Cap w/ Tails: God96TW
Spiked 'Maleficent' Shoulder Shrug: Fraise au Loup
"Faux Leather & Floral Belting": House of GoGé


Liquid-Skin Metallic Leggings: Forever 21
Patent Leather Crop-Top: Love J
Studded Shoulder Neckpiece: Costume Era
Cage Pannier Hoop Skirt: Atelier Sylphe Corsets
Fingerless Gloves: Spirit of Halloween
"Black'Balled Floral & Organza Fascinator": House of GoGe











Photography | MARCOS ROMANO
(WWW.MARCOSROMANO.COM)

Designer | CELINE BOLTON, BCB SHANGHAI

Model | TINGTING FOR ESEE MODELS, SHANGHAI
(WWW.ESEEMODEL.COM)